

A tradition of innovation since 1966

# HAYBUSTER®

## 1150 & 1155

[ commercial tub grinder ]

HAYBUSTER®



### **EXCLUSIVE Features available ONLY on the Haybuster Big Bite 1150 & 1155**

- The Truck Mounted Big Bite 1150 is easy to transport between jobs and is easy to maneuver into tight spots. Because the unit is mounted over the trucks rear axles, there is traction to get through the sloppiest farm and hay yards.
- The exclusive, innovative self-cleaning rotary screen protects the radiator and engine air intake from chaff and fines. That means no more plugged radiators so.....less down time.
  - The KPT Fluid coupler transmits power with up to 98% efficiency and eliminates the mechanical clutch. It's goof proof, can engage or disengage at full engine rpm without damage and requires minimal maintenance.
  - The 30 inch x 26 ft. discharge conveyor piles hay over 18 feet high. The conveyor can articulate left to right up to 50 degrees which means you can not only make the pile big, you can make it wide too.



# WHY A BIG BITE Tub Grinder?

Haybuster has been a part of hard working tub grinders since the late 1960's. Farmers and Ranchers have come to depend on our durability and performance.

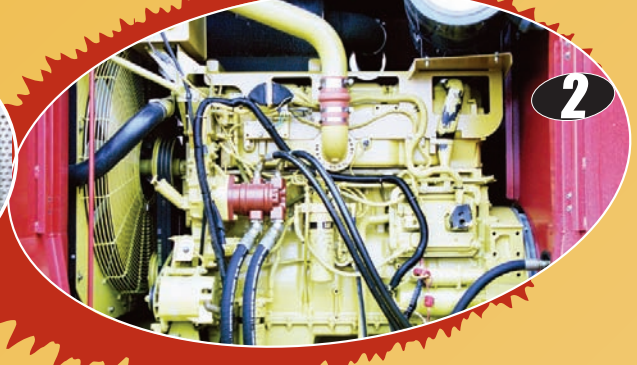
We know that cutting edge technology, high efficiency, and getting the most value for every dollar you spend are enormous factors when you purchase farm equipment. That's why we put

all of those and more into the Big Bite 1150 & 1155. The Haybuster Big Bite makes commercial hay grinding easy and profitable.

Here are some of the benefits that make the Big Bite 1150 & 1155 Tub Grinder the "standard setter" in commercial tub grinders.



1



2

**1** The enclosed engine compartment and rotary screen protects the engine from dirt and debris buildup. A covered engine also reduces the noise level. AND the 1150-1155 gives you easy access to the engine with a 3-door entry on both sides, plus a front door to the radiator.

**2** Powered by a 475hp or 540hp Model C15 Tier 3 Caterpillar engine, the state-of-the-art electronic fuel injection system decreases fuel consumption, producing ground hay at a rate that will make you money on every job. It's strong enough to chew through those tough, wet, bales, AND you get all the features you've come to expect from Caterpillar like reliability, cold weather starting, unsurpassed product support, and proven resale value.

**3** A central command console is conveniently located and controls all the functions of the machine. An optional remote control is available to keep you out of the dust! It controls the tub rotation, conveyor lift, conveyor articulation, and engine stop.

**4** The 11 ft wide x 50 inch deep tilt tub opens a full 90 degrees for access to the hammermill and screens as well as for normal servicing.

**5** The Big Bite hammermill is located at the rear of the sub frame, reducing the length of the belly conveyor, improving the belly conveyor service accessibility, and moving the dust further away from you. The hammermill is also dynamically balanced to give you smoother operation, longer life, and less maintenance.

**6** The electronic governor keeps the engine RPMs constant resulting in increased efficiencies and constant load.



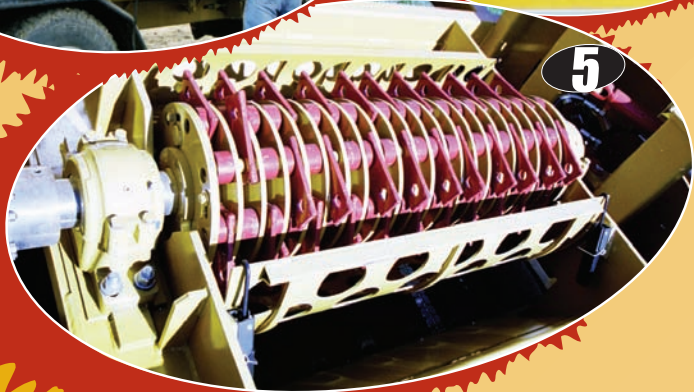
3



4



6



5

# Here's what they say...

*Haybuster's new 1150 has just made my life a whole lot easier. The truck mount design lets you get through mud and snow with ease. The wireless remote feature lets you run the machine without having to stand right by it. When the weather is not so perfect, this feature is wonderful. From front to back, this newly designed machine has undergone many changes. From its totally enclosed motor, fluid drive, heavier mill bearings, and side-to-side rear discharge conveyor, the Haybuster 1150, is one heavy built machine. In todays times effeciency is the key to profitability and Haybuster is keeping up with these needs. – Kurt Kaiser, SD*



The Big Bite 1155 offers you the convenience of a fifth-wheel semi trailer so you can use your existing truck for other jobs when you're not grinding. All the same features as the 1150..... AND flexibility too!

You told us you wanted a truck mounted commercial Tub Grinder, so our engineers went to work! And now here it is.....exactly what you want..... the Big Bite 1150.....the ONLY truck mounted commercial tub grinder in the business!

# Here's what they say...

*Since purchasing our 1150 tub grinder we've been impressed with its capacity and ease of operation. The radio control really works well. The truck-mounted grinder enables us to get around even if the weather conditions are poor. Mud and icy roads are not nearly as much of a problem any more. – Mylo Van Dyke, MN*



## Just remember...

*With Haybuster products, you're not alone. Your local dealer is available to answer your questions and provide parts and service support. They also have access to the technical support staff at Haybuster.*

## 1150 EQUIPMENT SPECIFICATIONS

WEIGHT Weight - 24,850 lbs. (11,272 kg)

## TRANSPORT DIMENSIONS

Width 10 ft (3.048 m)  
Length 31 ft (9.448 m)  
Height 11 ft 6 in (3.51 m)

## 1155 EQUIPMENT SPECIFICATIONS

Weight 34,100 lbs. (15,468 kg)  
Axle 27,900 lbs. (12,656 kg)  
Tongue 6,200 lbs. (2,813 kg)

## Transport Dimensions

Width 11 ft (3.35 m)  
Length 41 ft (12.5 m)  
Height 11 ft 6 in (3.51 m)

## 1150 & 1155 EQUIPMENT SPECIFICATIONS

ENGINE CAT Model C15 Tier 3  
Power Rating 475hp (354 kw) or  
540hp (403 kw)

Displacement 923 cu in (15.2 l)  
Fuel System Electronic Fuel Injection

## FLUID COUPLER

Manufacturer Transfluid  
Model KPTO-19 Fluid Coupling

## TUB FEATURES

Loading Height 9 ft 6 in (2.89 m)  
Tub Flare Width 11 ft 4 in (2.54 m)  
Depth 50 in (127 cm)  
Tub Diameter at Base 9 ft (2.74 m)  
Tub Wall Thickness 12 gage (2.66 mm)  
Tub Floor Thickness 1/4 in (6.35 mm)  
Drive Mechanism Electro/Hydraulic  
Speed Control Electronic Governor  
Service Access Tub opens to 90° to the right side

## BELLY CONVEYOR

Type Endless Rubber Belt with  
3/4 in (19.05 mm) Cleats  
Width 36 in (91.4 cm)

## DISCHARGE CONVEYOR

Width 30" (76.2 cm)  
Length 26' (7.92 m)  
Discharge Height 18 ft 3 in (5.56 m)  
Drive Hydraulic, Top Driven  
Articulation 50°

## CHASSIS FEATURES

Fuel Capacity Truck Dependant  
Lights Clearance, Directional, and  
Brake

Towing Arrangement Truck Mounted  
Axle Truck Dependant  
Brakes Truck Dependant  
Tires Truck Dependant

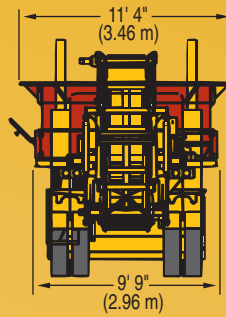
## HAMMERMILL

Length 50 in (127 cm)  
Diameter, hammers  
extended 26 in (66 cm)  
Feed Opening 25 in x 52 in (63.5 cm x  
133 cm)  
Hammers 1/2 in (12.7 mm) thick,  
A.B. Hardened, Swing  
Number of Hammers 88  
Hammer Rods 1-1/4 in (31.75 mm) dia,  
Case Hardened  
Mill Plates 1/2 in (12.7 mm) thick x 16 in  
(40.64 cm) dia  
Mill Shaft 4-1/2 in (114.3 mm), Stress  
Proof Steel  
Bearings 4 in (101.6 mm), Pillow Block  
Bearings  
Drive Direct from Fluid Coupling  
Screens 1/8 in (3.18 mm), 3/16 in  
(4.76 mm), or 1/4 in (6.35  
mm) thick and various hole  
sizes from 1/8 in (3.18 mm)  
to 8 in (203.2 mm)  
Screen Area 2,781 sq in (7063 sq cm)

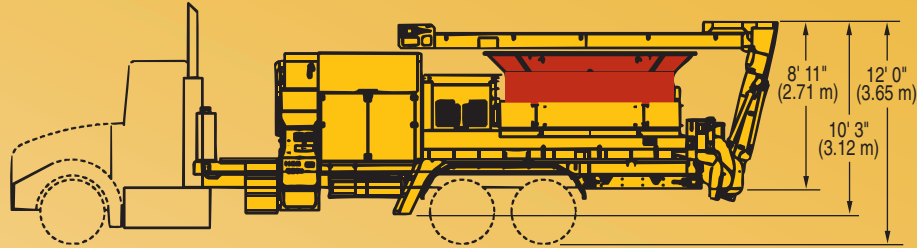
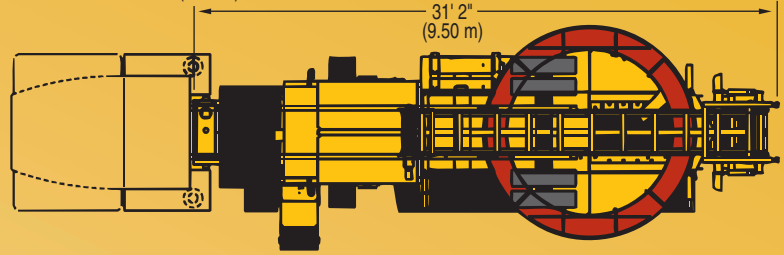
SPECIFICATIONS

1150 &

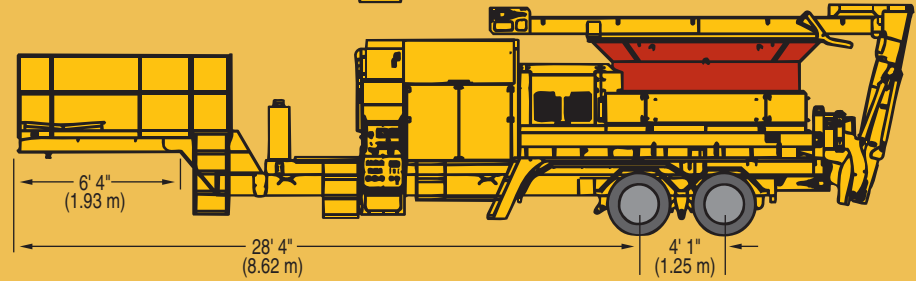
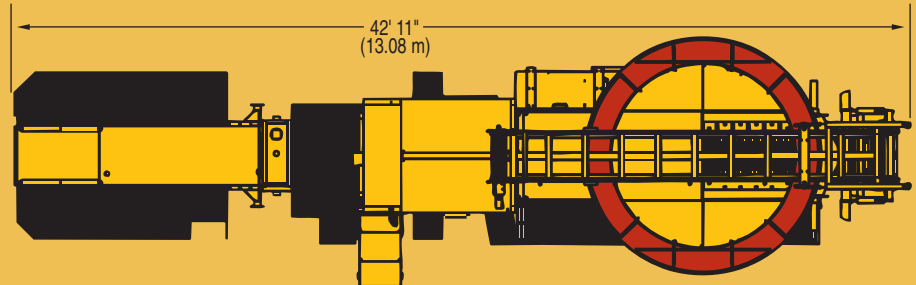
1155



1150



1155



PO Box 1940  
Jamestown, ND 58402-1940  
Phone: (701) 252-4601  
Fax: (701) 252-0502  
Website: www.haybuster.com



DuraTech Industries International, Inc. reserves the right to change its products or their specifications at anytime without notice or obligation. Illustrations, specifications, and descriptions contained herein were accurate at the time of publication, but are subject to change without notice. Illustrations may include optional equipment or accessories and may not include all standard equipment.